

# Adapting to Climate Change in New York City





**PROTECTING NYC  
FROM CLIMATE CHANGE**

# 8.6 Million New Yorkers



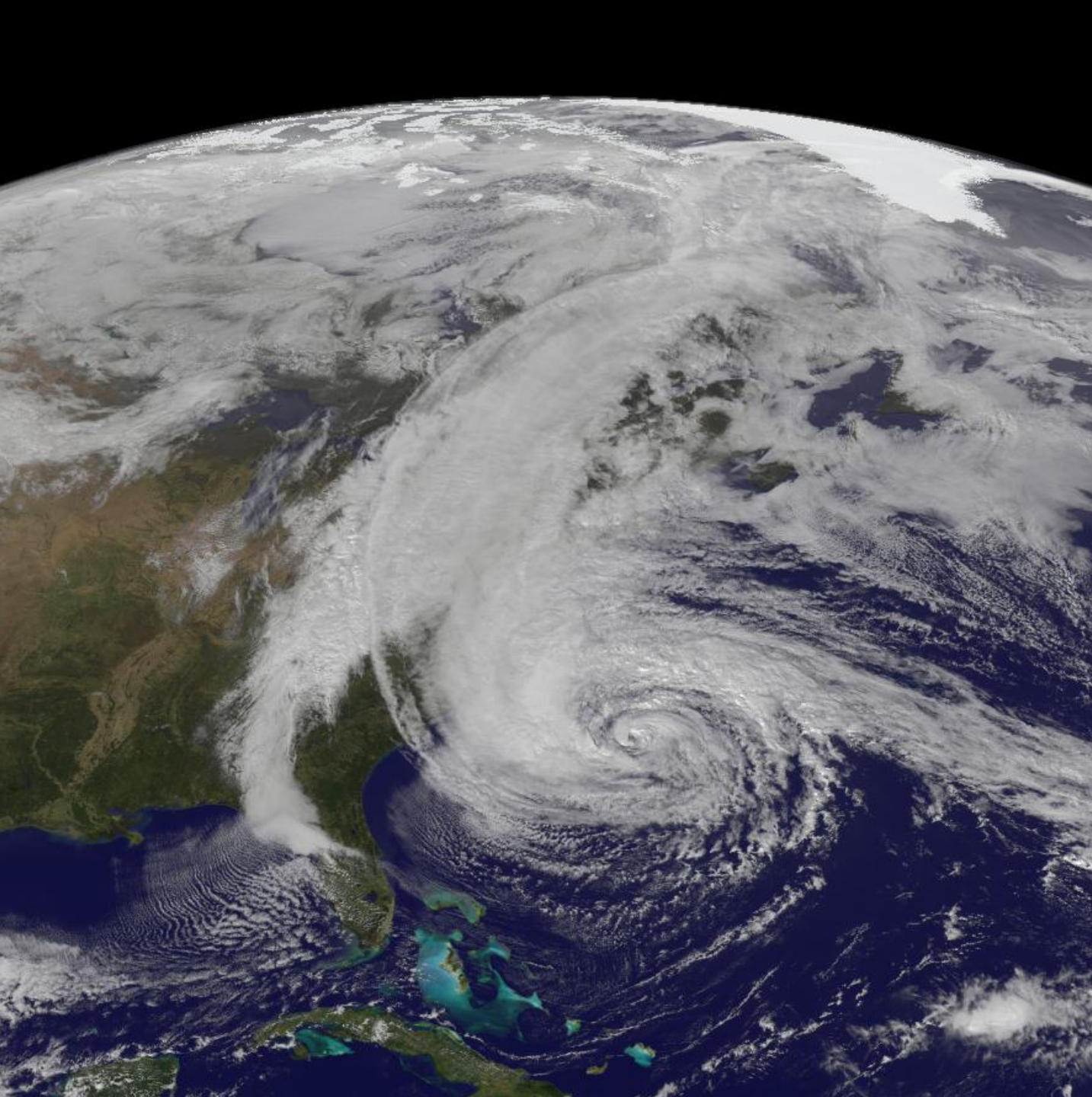
# 520 miles of diverse urban shoreline



# October 2012: Hurricane Sandy



- \$19 billion in damages
- 44 lives lost
- 89,000 buildings flooded



# Planning for the future

**By the 2050s, a Sandy-like storm could cause \$90 billion in damage and economic loss - nearly five times Sandy's impact.**

# Chronic 'sunny day' flooding



# Extreme heat





# Extreme precipitation

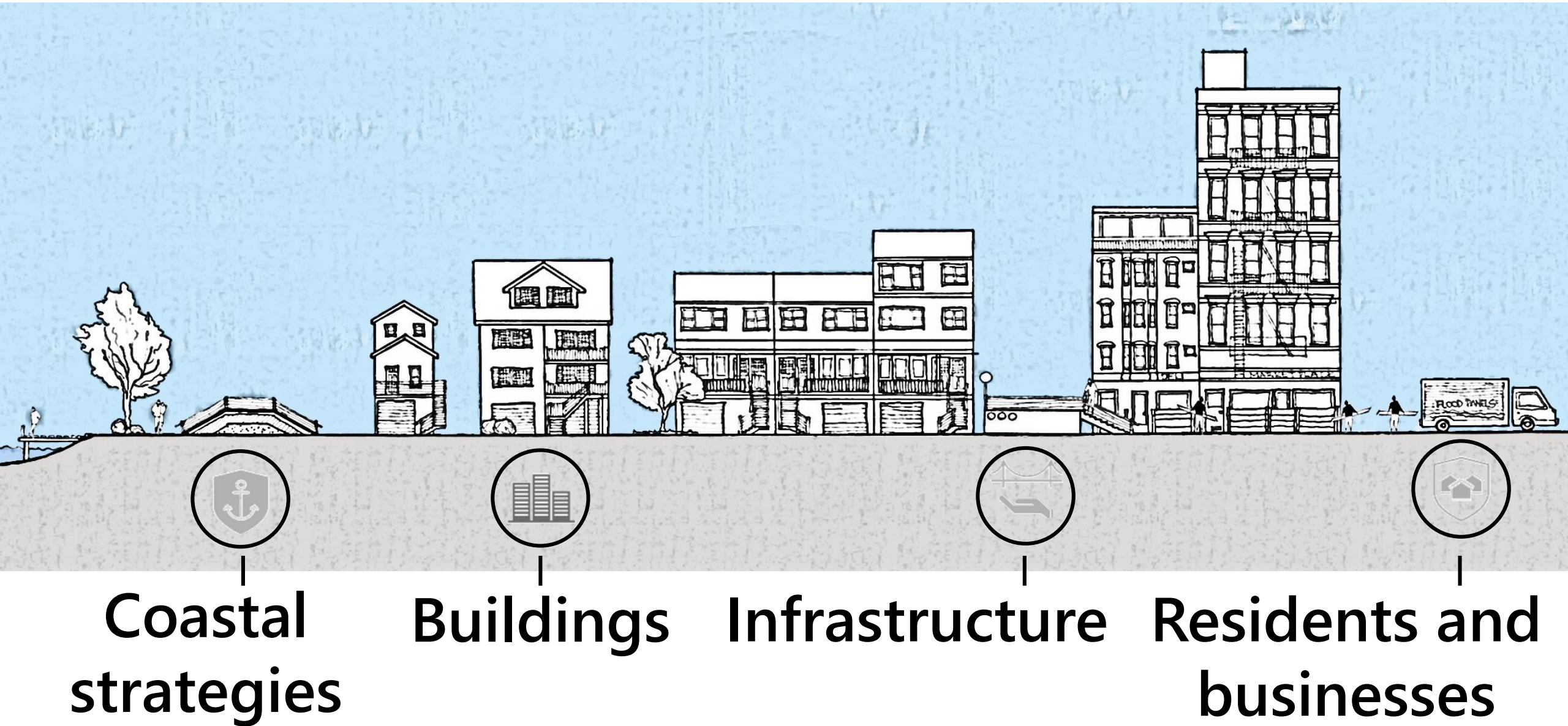


# Creating the future New Yorkers deserve

**We have an unprecedented opportunity to reimagine the waterfront, invest in underserved communities, and create safer and more vibrant neighborhoods**



# A multi-layered approach



# Coastal strategies



# Buildings

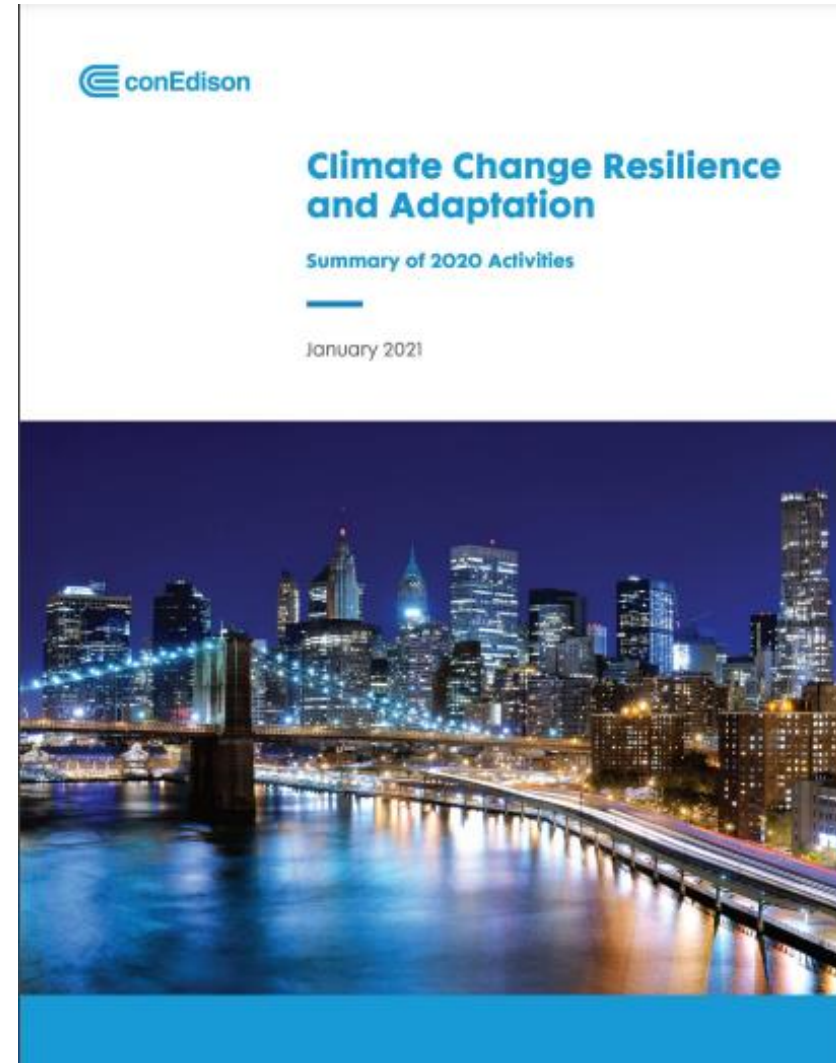
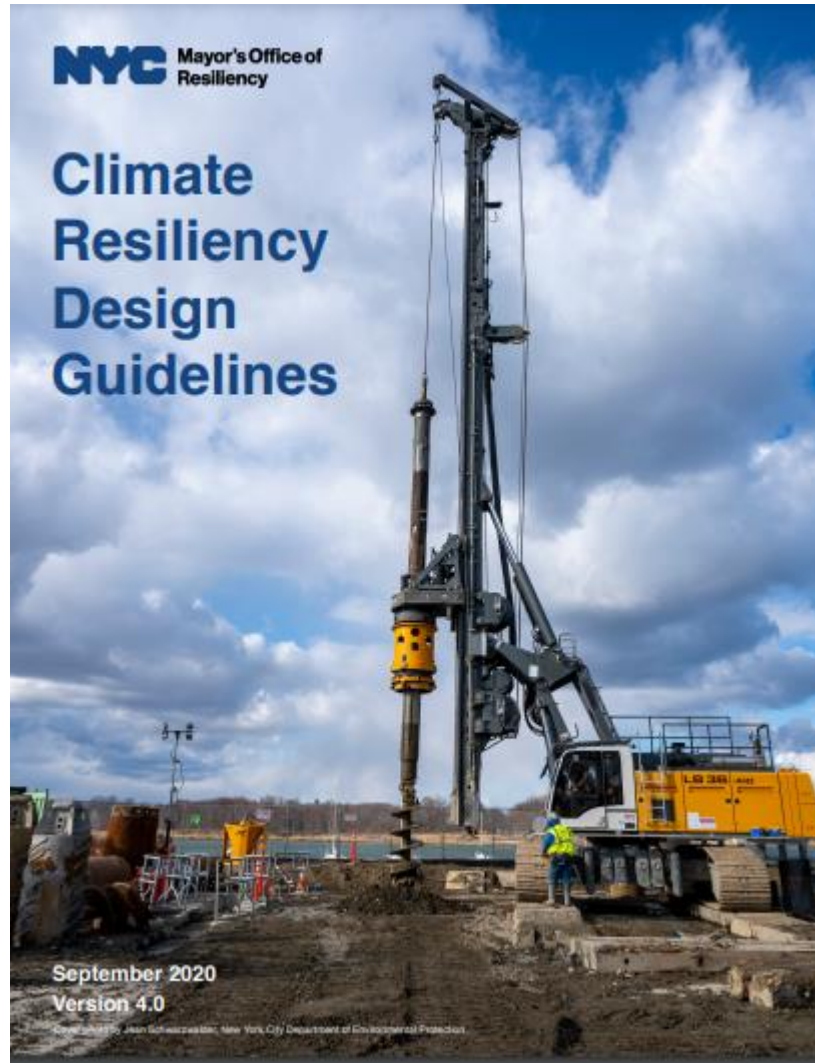


NYCHA – Albany Houses, Crown Heights, Brooklyn - 2016



NYCHA – Albany Houses after roof coating in 2018

# Infrastructure



# Residents and businesses

*Be Prepared*

Flood information made simple

Everything in one place

Everything explained

Simple language

What's the one thing you wished you had known about...

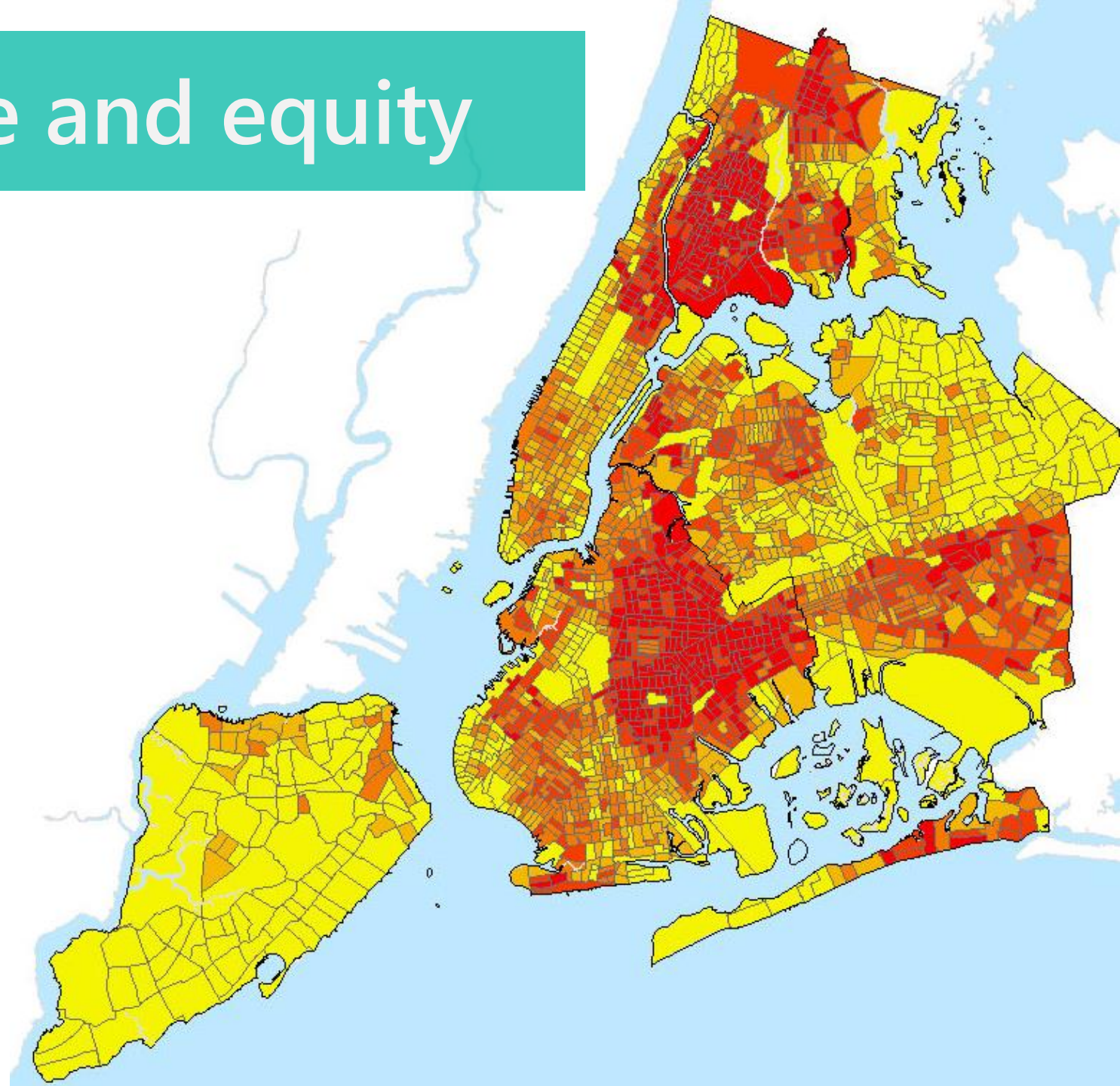
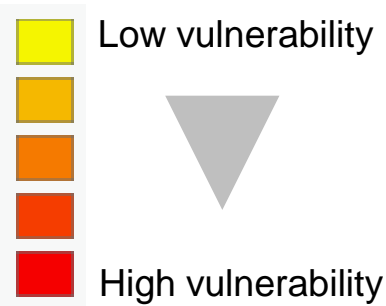
Timing  Flood insurance  Evacuation  
...before the storm hit?

If you had a magic wand to fix anything related to your Sandy experience today, it would be...

*A Flood Gate*

# Grounded in science and equity

## Heat Vulnerability Index





# Adapting to Climate Change in New York City

